

Printing With AssetWorx!

Version 3.0
March 22nd, 2022
© InfinID Technologies, Inc.

TABLE OF CONTENTS

Printing Overview	3
Printing Software	4
Configuring the Print Server	4
Creating Print Templates	5
Printing in AssetWorx.....	6
Setting Up Bartender Templates	7
Print Variable Names	8
Basic Variable Names	8
Custom Variable Names	8

Printing Overview

AssetWorx supports either printing directly through Bartender, or printing to a CSV file which can then be processed as the user desires. This document will go over the necessary steps for setting up the system to print in either way.

AssetWorx! is structured to support a distributed architecture. This means that many components can be running in different environments. For instance, you will only have one web server, but you could potentially have multiple print servers running.

Printing Software

AssetWorx provides a dedicated Print Server software application. This application runs as a Windows Service. To provide immediate print handling, the AssetWorx Print Server can be configured to use the MQTT protocol or operate in batch mode with direct database transactions.

You can also use the Alarm Monitoring Service to handle your printing. The Alarm Monitoring Service uses periodic HTTP polling and is not as flexible as the AssetWorx Print Server. The Alarm Monitoring Service should only be used when using the Print Server is prohibited.

Configuring the Print Server to use MQTT

The AssetWorx installer can help you install the Print Server. Before the Print Server can be installed though, you must create a Print Client. After logging into AssetWorx, click Tools->Options and then click on the MQTT tab. Make sure MQTT is enabled and then under Print Clients, click Add. Start with choosing a Username and Password. AssetWorx supports a multi-tenant architecture. You can add extra tenants as Companies within the system that have total data isolation. The AssetWorx Print Server allows you to configure a Print Client to support multiple Company tenants throughout the enterprise. Add the Companies you want to assign to the Print Client and click Save.

Add/Edit Print Client

Name

Main Print Server

Username

myprintclient

Password

NRC6E6PHmd7UxEVr2qbuXIJSIUUQR0OhGHtNlBhOrWvHXqfDJe

Generate Password

Available Companies:

Add

Assigned Companies:

My Company

Remove

Save



Cancel

Creating Print Templates

Create a print template for each unique file print format that you wish to use. If Print Method is Bartender, File Path refers to the full file path of the Bartender file on the Print Server or Alarm Monitoring Service machine that will process the print job.

If printing will be done with the AssetWorx Print Server with MQTT, choose the Print Client under the Use with Print Client section. If printing will be done with the Alarm Monitoring Service or the Print Server in Batch Mode, enter the Machine Name of the computer that is running the Alarm Monitoring Service or Print Server.

Edit Template

 Save  Cancel

Name

Print Type

Print Method

File Path

Use With Alarm Monitoring Service

Use With Print Client

Printing in AssetWorx

Printing can be accomplished in AssetWorx! on either the Asset Paging, Location Paging, Edit Asset, or Edit Location screen. Batch Printing can be accomplished by simply selecting which items you wish to print and then clicking Batch Print under Custom Actions. The Print Jobs will then be created and processed by the appropriate Alarm Monitoring Service.

AssetWorx!

Screens ▾ Views ▾ Tools ▾ Reports ▾ Help ▾

Assets

+ Add

Edit

Delete

Custom Actions ▾

Type to search

<input type="checkbox"/>	Name	Active Tag	Location Name
<input checked="" type="checkbox"/>	A000000	000000	Room
<input checked="" type="checkbox"/>	A00108E	00108E	ng
<input type="checkbox"/>	A00404B	00404B	

Batch Print

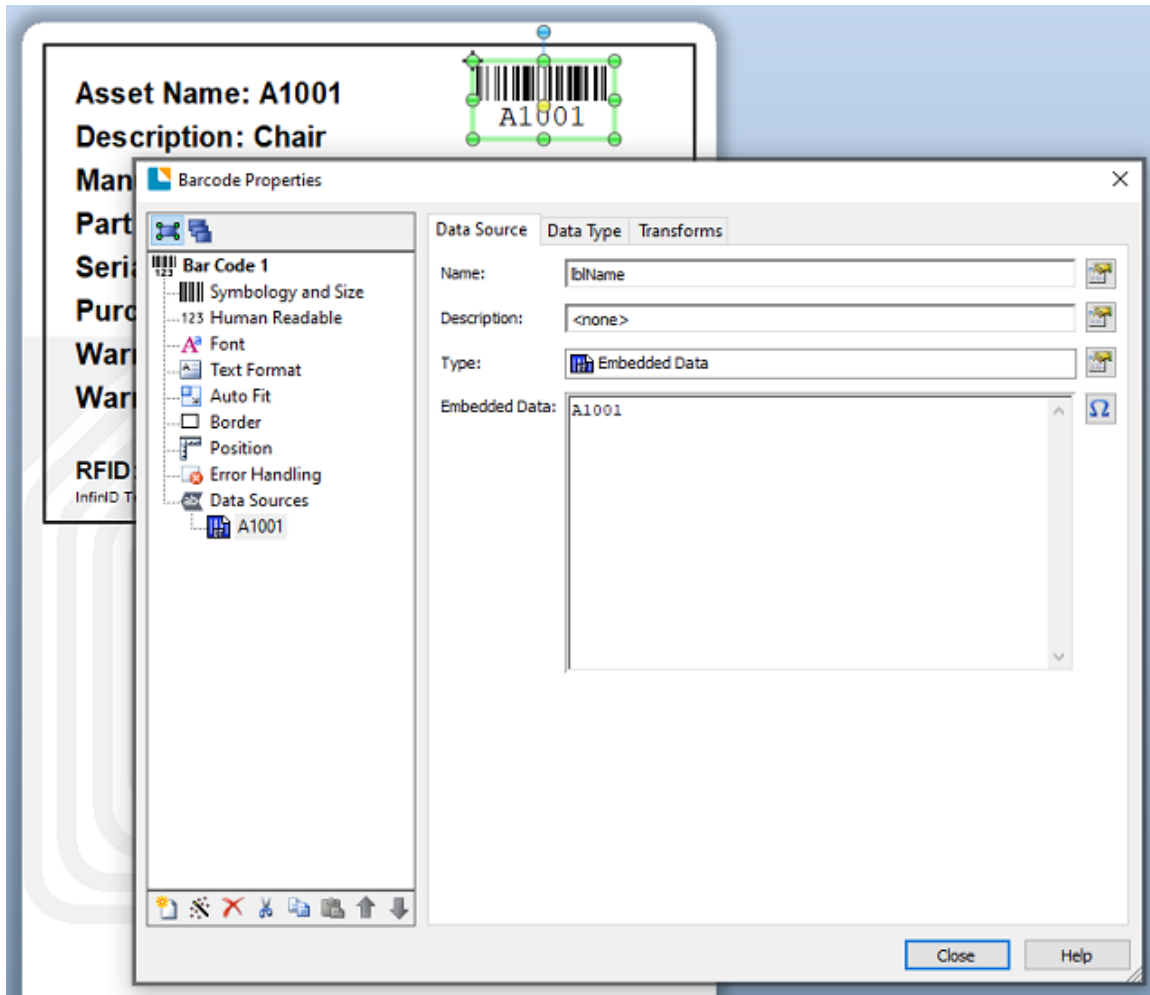
Batch Move

Import

Export

Setting Up Bartender Templates

The AssetWorx installer package has a directory called “Print Templates” which includes some basic template formats as an example. These can be modified as desired. In printing directly to Bartender, AssetWorx will attempt to replace any Bartender Data Sources through their Name value. As an example below, lblName corresponds to the Asset Name field and printing to Bartender through AssetWorx will replace any objects in the template that have the Data Source name lblName with the corresponding AssetWorx object value.



Print Variable Names

Below is a list of the various names that should be utilized in order to inject AssetWorx data into a Bartender template through the Data Source object values:

Basic Variable Names

Basic variable names are shared names whose values never change:

lblName
lblDepartmentCode
lblAssetType
lblDescription
lblRfidTag
lblLocationName
lblVTagID

Custom Variable Names

Custom variable names are shared names whose values can be changed to modify how the fields are displayed. Although their default values are listed below, changing the name of your Custom Field Names will change how they should be named in bartender. For instance, if the Text_1 Custom Field Name is changed to Supplier, you would then have to use the Bartender shared name of “lblSupplier” instead of lblText1. Change Custom Field Names under the Tools menu:

lblText1
lblText2
lblText3
lblText4
lblText5
lblText6
lblText7
lblText8
lblText9
lblText10
lblText11
lblText12
lblText13
lblText14
lblDate1
lblDate2
lblDate3
lblDate4
lblDate5
lblListValue1
lblListValue2
lblListValue3
lblListValue4
lblListValue5